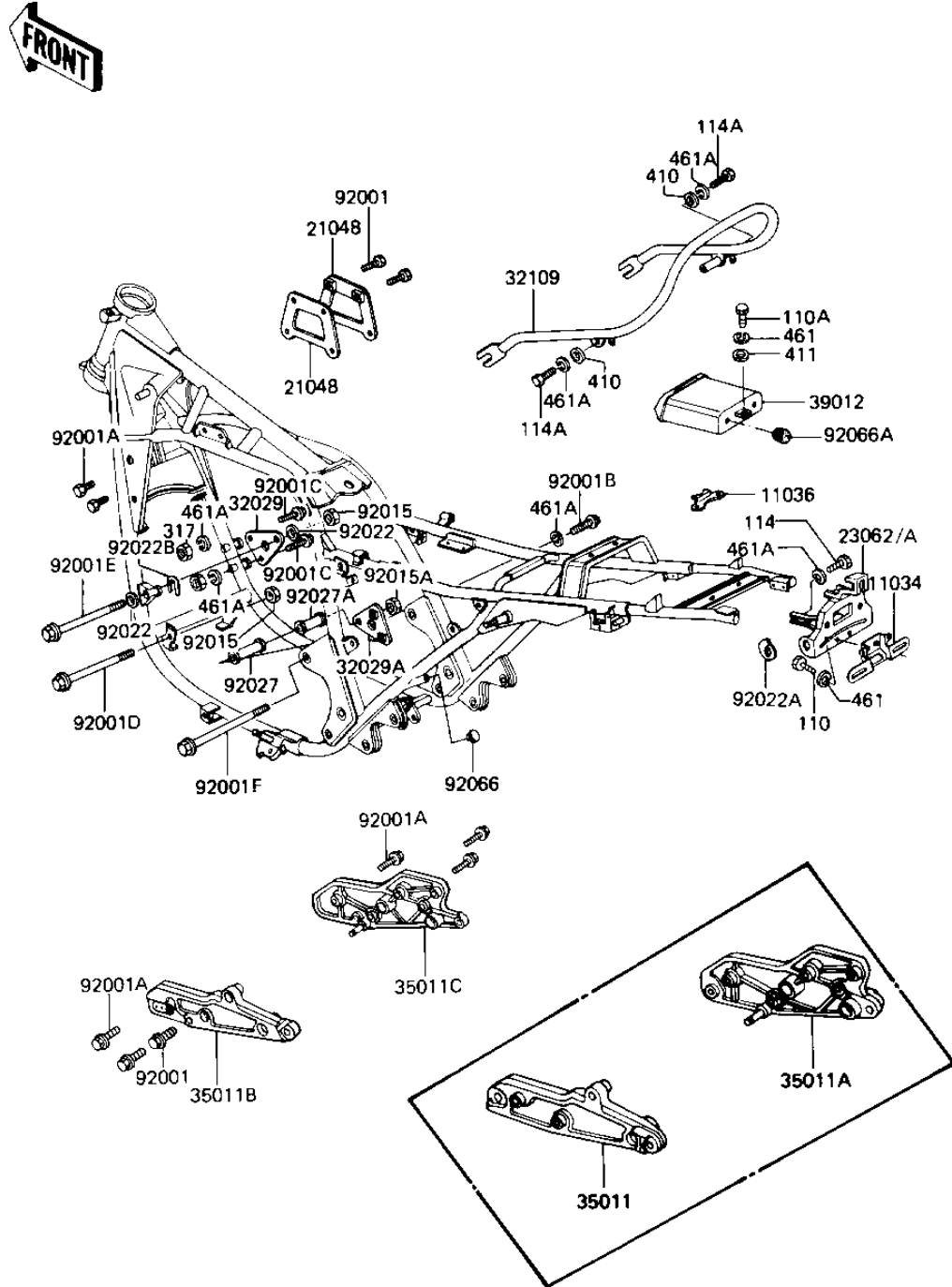


1981 1000 Standard PARTS DIAGRAM

FRAME FITTINGS

F2131-0124



1981 1000 Standard PARTS LIST

FRAME FITTINGS

ITEM NAME	PART NUMBER	QUANTITY
BRACKET (Ref # 11034)	11034-1922	1
BRACKET-A,STORAGE (Ref # 11036)	11036-1070	1
PLATE,IGNITION COIL (Ref # 21048)	21048-1001	1
BRACKET-COMP,TL LAMP (Ref # 23062)	23062-1032	1
BRACKET-ENGINE (Ref # 32029)	32029-1142	1
BRACKET-ENGINE (Ref # 32029A)	32029-1143	1
GRIP-FRAM (Ref # 32109)	32109-1028	1
STAY,MUFFLER,LH (Ref # 35011)	35011-1086	1
STAY,MUFFLER,RH (Ref # 35011A)	35011-1087	1
CASE-STORAGE (Ref # 39012)	39012-1014	1
BOLT,HEX HEAD,6MM (Ref # 92001)	92001-137	1
BOLT,FLANGED,8X35 (Ref # 92001A)	92001-1577	1
BOLT (Ref # 92001B)	92001-1578	1
BOLT-FLANGE (Ref # 92001C)	92001-1582	1
BOLT (Ref # 92001D)	92001-1585	1
BOLT,FLANGED,10X320,B (Ref # 92001E)	92001-1624	1
BOLT,FLANGED,8X85 (Ref # 92001F)	92001-1596	1
NUT,10MM (Ref # 92015)	92015-1429	1
NUT-LOCK,12MM (Ref # 92015A)	92019-009	1
WASHER,PLAIN (Ref # 92022)	92022-1022	1
WASHER,SIGNAL LAMP BR (Ref # 92022A)	92022-1230	1
WASHER,U FORMED (Ref # 92022B)	92022-1259	1
COLLAR,FR AXLE,L=27 (Ref # 92027)	92027-1318	1
COLLAR,STEP (Ref # 92027A)	92027-1314	1
PLUG,FRAME END (Ref # 92066)	92066-1034	1
RUBBER PLUG (Ref # 92066A)	92074-038	1
BOLT-UPSET,6X12 (Ref # 110)	112G0612	1
BOLT-UPSET,6X16 (Ref # 110A)	112G0616	1
BOLT-SMALL-UPSET,8X16 (Ref # 114)	115G0816	1

1981 1000 Standard PARTS LIST

FRAME FITTINGS

ITEM NAME	PART NUMBER	QUANTITY
BOLT HEX HEAD 8X70 (Ref # 114A)	114B0870	1
NUT,8M/M (Ref # 317)	317B0800	1
WASHER PLAIN 8MM (Ref # 417)	410B0800	1
WASHER PLAIN 6MM (Ref # 411)	411B0600	1
UNAVAILABLE IN PRICE BOOK (Ref # 461)	46180600	1
WASHER SPRING (Ref # 461A)	461B0800	1